

Manual of Standards and Recommended Practices for Rail Transit Systems

Volume III

Rail Grade Crossing Practices

First Edition-2004

Compiled under the direction of the Rail Transit Standards Policy Committee of the American Public Transportation Association

Copyright © 2004 by The American Public Transportation Association
1666 K Street, N.W.
Washington, DC 20006-1215
All Rights Reserved.



Introduction

This is the third volume of a six volume set comprising the American Public Transportation Association *Manual of Standards and Recommended Practices for Rail Transit Systems*. The standards and recommended practices contained in this manual represent an industry consensus on practices to help rail transit systems achieve a high level of safety for passengers, employees, and the general public. This manual was created by and for those parties concerned with its provisions; namely, rail transit systems (operating agencies), manufacturers, consultants, engineers, and general interest groups.

This volume contains standards and recommended practices for designing, inspecting, maintaining, and operating grade crossing systems to ensure rail transit system grade crossing safety.

The entire set is comprised of the following volumes:

Volume 1-Rail Transit Standards Background and Process Description

Volume 2-Vehicle Inspection and Maintenance

Volume 3-Rail Grade Crossing Practices

Volume 4-Operating Practices

Volume 5-Fixed Structures Inspection and Maintenance

Volume 6-Signals and Communications Inspection and Maintenance

Please refer to Volume I for important information and guidance for implementation of these standards and recommended practices.

To obtain copies of any of these volumes contact:

Information Center
American Public Transportation Association
1666 K Street, N.W.
Washington, D.C. 20006-1215
202 496-4089

Contents

Volume III

Rail Grade Crossing Practices Documents

Introduction	Volume III.i
RT-S-RGC-001-02, Standard for Rail Transit System Highway Rail Grade Crossing Warning Device Inspection, Testing and Maintenance	1.i
RT-RP-RGC-002-02, Recommended Practice for Rail Transit Grade Crossing Public Education and Rail Trespass Prevention	2.i
RT-RP-RGC-003-03, Recommended Practice for Rail Transit System Highway Rail Grade Crossing Safety Assessment	3.i
RT-S-RGC-004-03, Standard for Rail Transit Grade Crossing Warning System Design Criteria, Installation and Operation	4.i

Rail Grade Crossing Practices Committee

The APTA Rail Transit Standards Rail Grade Crossing Practices Inspection and Maintenance Committee developed and approved the documents contained in this manual through a consensus process fully described in Volume I.

Ron Swindel, Assistant Vice President, Systems Engineering at DART, chaired the committee, Phil Olekszyk, of World Wide Rail, Inc., served as the APTA Staff Advisor to the committee, and Nicholas Barr and Albert Powel, of Booz Allen Hamilton, organized and facilitated the meetings.

Table 1 lists the Rail Grade Crossing Practices Committee membership. The committee organized into working groups as shown in figure 1.

The committee held the following face-to-face meetings to accomplish its work plan:

- 1st – March 6-7, 2001 hosted by APTA – Washington, DC
- 2nd – July 10-11, 2001 hosted by LACMTA-Los Angeles, CA
- 3rd – October 16-17, 2001 hosted by CTA--Chicago, IL
- 4th – January 22-23, 2002 hosted by Miami Dade Transit--Miami, FL
- 5th – April 17-18, 2002 hosted by DART – Dallas, TX
- 6th – July 23-24, 2002 hosted by NJ Transit – Newark, NJ
- 7th – October 8-9, 2002 hosted by Tri-Met--Portland, OR

The remainder of this volume contains the documents developed by the Rail Grade Crossings Committee.

Table 1 – APTA Rail Transit Standards Rail Grade Crossing Practices Committee Membership

First Name	Last Name	Agency Name	Work Number	E-mail Address
Nicholas	Bahr	Booz, Allen & Hamilton, Inc.	(703) 377-0372	bahr_nicholas@bah.com
Robert	Banks, Jr.	Tri-County Metropolitan Transportation District of Oregon	(503) 962-2172	banksb@tri-met.org
William	Browder	Association of American Railroads	(202) 639-2474	wbrowder@aar.org
Richard	Brown	Transpo Industries, Inc.	(914) 636-1000	rbrown@transpo.com
Lynda	Bybee	Los Angeles County Metropolitan Transportation Authority	(213) 922-6340	bybeel@mta.net
Terry	Byrne	SYSTRA Consulting	(617) 423-3777	tbyrne@systrausa.com
Richard	Campbell	Railroad Controls Limited	(817) 820-6300	rcampbell@railroadcontrols.com
Daniel	Carrizales	Dallas Area Rapid Transit	(214) 928-6240	dcarriza@dart.org
Steven	Carroll	Hillborough Area Transit Authority	(813) 223-6831	carrolls@hartline.org
Debra	Chappell	USDOT/Federal Highway Administration	(202) 366-0087	debra.chappell@fhwa.dot.gov
Melvin	Clark	Metro	(314) 982-1408	mclark@bsda.org
Brian	Clark	PB Transit & Rail Systems	(973) 565-4833	clarkb@pbworld.com
K.	Cooper	Tri-County Metropolitan Transportation District of Oregon	(503) 962-4824	cooperk@tri-met.org
Rhonda	Crawley	Federal Transit Administration	(202) 366-4035	rhonda.crawley@fta.dot.gov
Terrence	Culhane	MTA Police Department	(212) 878-4635	tculhane@mtahq.org
Jack	Dickens	Nestor Traffic Systems Inc.	(904) 280-2996	jdickens@nestor.com
Charles	Dickerson	New Jersey Transit	(973) 491-8480	cdickerson@njtransit.com
Sebastian	Dragu	Chicago Transit Authority	(312) 432-7081	sdragu@hotmail.com
Alfred	Fazio	21st Century Rail Corporation	(201) 324-1800	al.fazio@wgint.com
Manuel	Galdo	Federal Railroad Administration	(202) 493-6323	manuel.galdo@fra.dot.gov
Nicole	Gamache	Railway Progress Institute	(703) 836-2332	gamache@rpi.org
Wende	Gannon	Operation Lifesaver, Inc.	(703) 739-9126	wgannon@oli.org
Chuck	Gibson	Adtranz	(412) 655-5220	chuck.gibson@us.transport.bombardier.com
Susan	Gilbert	Interactive Elements Inc.	(212) 490-9090	sbg@ieitransit.com
Brian	Gillera, P.E.	Federal Railroad Administration	(202) 493-6276	brian.gillera@fra.dot.gov
Alex	Goff	Washington Group International, Inc.	(860) 667-7622	al.goff@wgint.com
Jack	Graham	Dallas Area Rapid Transit	(214) 749-2939	jgraham@dart.org
Greg	Hackbarth	Railroad Controls Limited	(817) 820-6300	ghackbarth@railroadcontrols.com
Peter	Hackley	Carter-Burgess	(512) 314-3100	hackleypf@c-b.com
Gerri	Hall	Operation Lifesaver, Inc.	(703) 739-1065	ghall@oli.org
Antoinette	Hankins	American Public Transportation Association	(202) 496-4804	thankins@apta.com
Vernon	Hartsock	Mass Transit Administration	(410) 767-3318	vhartsock@mdot.state.md.us
Mark	Jones	Federal Railroad Administration	(202) 493-6232	mark.jones@fra.dot.gov

First Name	Last Name	Agency Name	Work Number	E-mail Address
Ronald	Keele	Washington Metropolitan Area Transit Authority	(202) 962-2406	rkeele@wmata.com
Miriam	Kloeppe	National Transportation and Safety Board	(202) 314-6487	kloeppe@ntsb.gov
Ken	Kobetsky, P.E.	AASHTO	(202) 624-5254	kenk@ashto.org
Hans	Korve	Korve Engineering, Inc.	(510) 763-2929	hkorve@korve.com
Quon	Kwan	Federal Transit Administration	(202) 366-4035	quon.kwan@fta.dot.gov
Robert	Lauby, P.E.	Booz, Allen & Hamilton, Inc.	(703) 902-4664	lauby_robert@bah.com
John	Lech	Edwards and Kelcey, Inc.	(610) 701-1184	jlech@ekmail.com
David	Lozeau	Chicago Transit Authority	(312) 432-7015	dlozeau@transitchicago.com
Chuck	Maples	Rail Operations Planning & Activation	(408) 321-7147	chuck.maples@vta.org
Michael	Mcardle	Vanasse Hangen Brustlin, Inc.	(617) 728-7777	mmcardle@vhb.com
Harry	McCall, CSP	Hudson Bergen Light Rail	(201) 209-2551	harry.mccall@wgint.com
Linda	Meadow	Linda J. Meadow & Associates	(707) 748-1530	ljmeadow@earthlink.net
John	Mitchell	Amtrak Commuter Rail - Boston	(617) 222-3613	mitchej@amtrak.com
Jeffrey	Mora	Federal Transit Administration	(202) 366-0215	jeffrey.mora@fta.dot.gov
Paul	O'Brien	Utah Transit Authority	(801) 352-6731	pobrien@uta.cog.ut.us
Phil	Olekszyk	World Wide Rail, Inc.	(804) 694-4609	wwrail@aol.com
Lorraine	Pacocho	Massachusetts Bay Transportation Authority	(617) 222-1668	lpacocho@mbta.com
Thomas	Peacock	American Public Transportation Association	(202) 496-4805	tpeacock@apta.com
William	Petit	Safetran Systems	(585) 349-2305	bill.petit@ieee.org
David	Phelps	American Public Transportation Association	(202) 496-4885	dphelps@apta.com
Albert	Powell	Booz, Allen & Hamilton, Inc.	(703) 377-0860	powell_albert@bah.com
Jeffrey	Power	ALSTOM Signaling, Inc.	(716) 279-2685	jeff.power@transport.alstom.com
Linda	Rhodes	Chicago Transit Authority	(312) 432-7083	lrhodes@transitchicago.com
Ron	Ries	Federal Railroad Administration	(202) 493-6285	ron.ries@fra.dot.gov
Mark	Robinson	Santa Clara Valley Transportation Authority	(408) 793-8702	mark.robinson@vta.org
Harry	Saporta	Federal Transit Administration	(202) 366-2896	harry.saporta@fta.dot.gov
Paul	Schneider	New Jersey Department of Transportation	(609) 530-5681	paul.schneider@dot.state.nj.us
Robert	Sedlock	New Jersey Department of Transportation	(609) 292-6893	bobsedlock@dot.state.nj.us
Jason	Sergent	Booz, Allen & Hamilton, Inc.	(410) 752-1912	sergent_jason@bah.com
John	Sharkey	Safetran Systems Corporation	(847) 697-7578	john.sharkey@safetran.com
Michael	Small	Balfour Beatty Rail Systems Inc.	(904) 378-7133	smallm@bbrailinc.com
Fred	Small	Federal Highway Administration	(202) 366-9212	fred.small@fhwa.dot.gov
James	Stem	United Transportation Union	(202) 543-7714	jamesastem@aol.com
Ronald	Swindell	Dallas Area Rapid Transit	(214) 749-2914	rswindel@dart.org
Naor	Wallach	ALSTOM Signaling, Inc.	(716) 783-2065	naor.wallach@transport.alstom.com
Jack	Webb, PE,	Carter & Burgess, Inc.	(214) 920-8048	webbjw@c-b.com

First Name	Last Name	Agency Name	Work Number	E-mail Address
Terrell	Williams	Federal Transit Administration	(202) 366-0232	terrell.williams@fta.dot.gov
Robert	Winans	Federal Highway Administration	(202) 366-4656	robert.winans@igate.fhwa.dot.gov
Thomas	Woll	Federal Railroad Administration	(202) 493-6290	tom.woll@fra.dot.gov
Vanessa	Young	Memphis Area Transit Authority	(901) 722-7163	vyoung@matatransit.com
Tom	Zeinz	Canadian National / Illinois Central	(708) 206-3557	tom.zeinz@cn.ca
Abdul	Zohbi	Los Angeles County Metropolitan Transportation Authority	(213) 922-7396	zohbia@mta.net

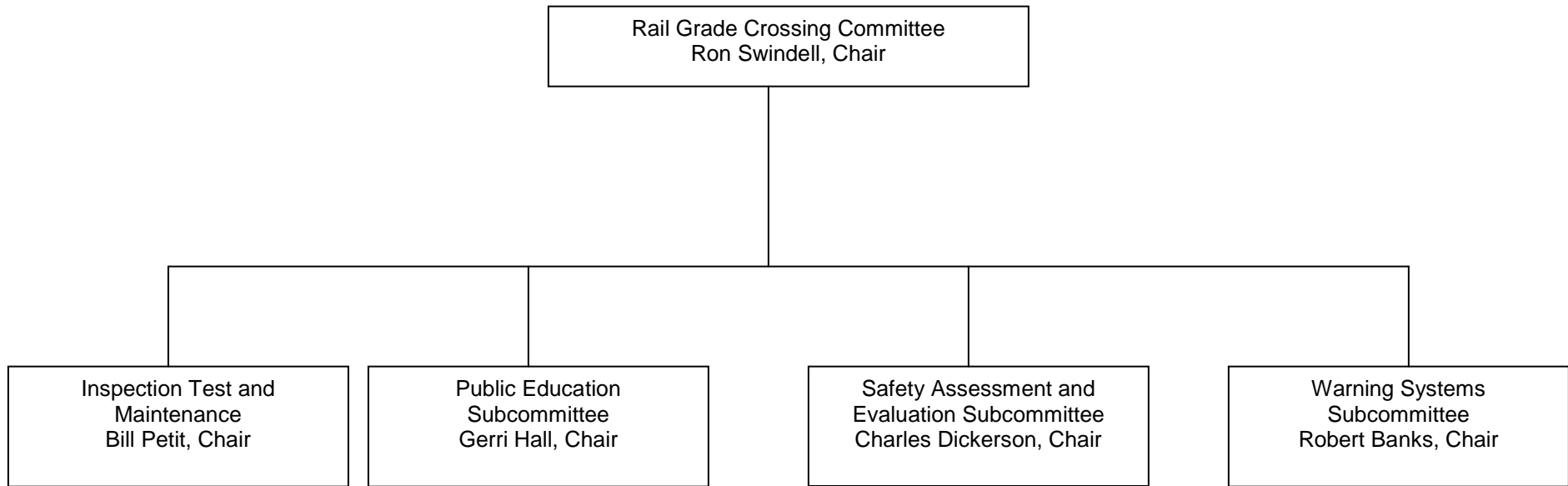


Figure 1 – Rail Grade Crossing Practices Committee