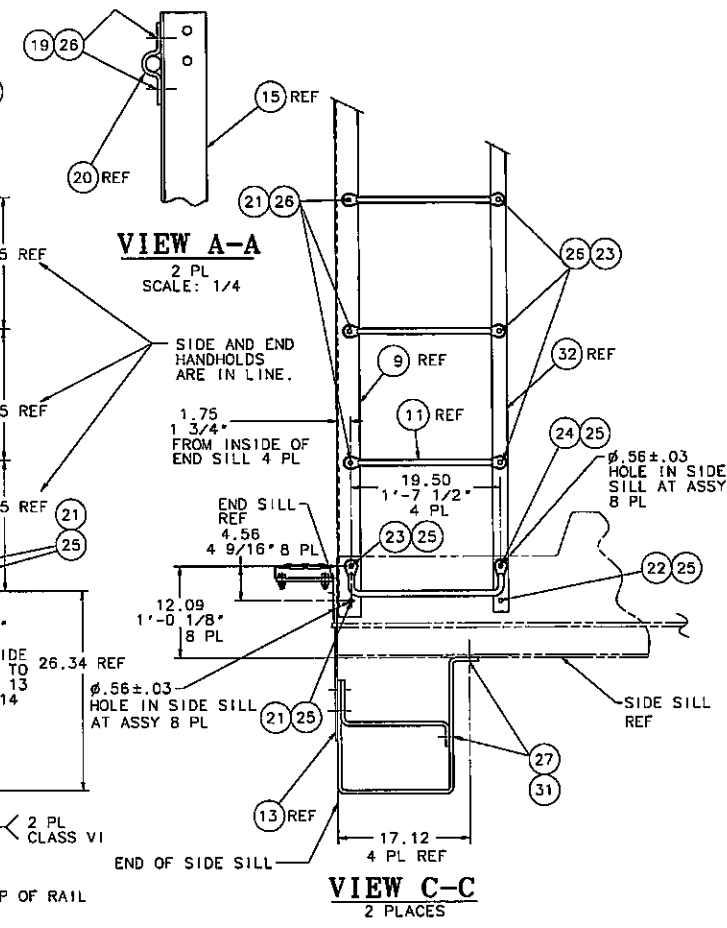
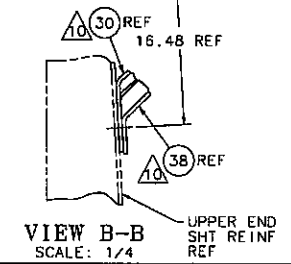


LINE NO. & QTY	PART NO.	DWG. NO.	DESCRIPTION & MATL.	NOTE/ITEM
21 2	6J148500	3-J-1485-00	HANDHOLD	1
12 12	8F960080	3-F-9600-80	HANDHOLD	2
2 2	6J148500	3-J-1485-00	HANDHOLD	3
2 2	3V565000	3-V-5650-00	STILE	4
2 2	3W540000	3-W-5400-00	STIFFENER-BRACKET	5
4 4	8D652328	4-D-6523-28	HANDHOLD	6
2 2	8F960081	3-F-9600-81	HANDHOLD	7
2 2	57335201	2-J-1487-02	HANDHOLD	8
2 2	3V565200	3-V-5652-00	POST	9
2 2	3V565300	3-V-5653-00	POST	10
12 12	8D652324	4-D-6523-24	HANDHOLD	11
4 4	3J770767	3-J-7707-67	HANDHOLD	12
- 2	1G987101	1-G-9871-01	SUPPORT	13
- 2	2H837401	2-H-8374-01	SUPPORT	14
2 2	2L000700	2-L-0007-00	SUPPORT	15
4 4	2J144800	2-J-1448-00	STEP	16
4 4	2J144900	2-J-1449-00	STEP	17
2 2	3K506900	3-K-5069-00	CLIP	18
36 36	90001312		BOLT-LOCK, 1/2 HUCK CSOLR-BR16-4	19
2 2	2J996900	2-J-9969-00	BRACKET	20
70 70	90001313		BOLT-LOCK, 1/2 HUCK CSOLR-BR16-8	21
20 20	90001314		BOLT-LOCK, 1/2 HUCK CSOLR-BR16-12	22
16 16	90001315		BOLT-LOCK, 1/2 HUCK CSOLR-BR16-16	23
4 4	90001490		BOLT-LOCK, 1/2 HUCK CSOLR-BR16-20	24
42 42	90002253		COLLAR-1/2\" HUCK 3LC-2R-16G	25
116 116	90002359		COLLAR-1/2\" HUCK LC-2R16-G	26
8 8	90001518		BOLT-LOCK, 5/8 HUCK CSOLR-BR20-12	27
6 6	90001519		BOLT-LOCK, 5/8 HUCK CSOLR-BR20-16	28
4 4	3W540100	3-W-5401-00	BRACKET-END RUNNING BD	29
2 2	4W546000	4-W-5460-00	BRACE-BRACKET, END RUNNING BD	30
14 14	90002218		COLLAR-5/8\" HUCK LC-2R-20G	31
4 4	3V564800	3-V-5648-00	STILE	32
2 2	2K993001	2-K-9930-01	CONNECTION	33
2 2	2K993000	2-K-9930-00	CONNECTION	34
2 2	4V279003	4-V-2790-03	ANGLE	35
2 2	1G987100	1-G-9871-00	SUPPORT	36
2 2	2H837400	2-H-8374-00	SUPPORT	37
2 2	4W540200	4-W-5402-00	BRACE-BRACKET, END RUNNING BD	38



- NOTES:
- ALL SAFETY APPLIANCES SECURED WITH 1/2 INCH MIN DIA FASTENERS.
  - APPLY SEALER BETWEEN PRIMER AND FINISH COATS OF PAINT SEE STENCIL ARRGT B/M.
  - LAP AND JOINT PRIMER: USE SURPLUS PRIMER SEE STENCIL ARRGT B/M.
  - FOR WELDS NOT OTHERWISE SPECIFIED SEE WP 5099 OR WP 5100.
  - FOR PARAGOULD/KENNETT WELDING PROCEDURES REFER TO WP ASXXX.
  - REMOVED
  - INSTALL ALL FASTENERS WITH HUCK COLLARS FACING OUT WHERE POSSIBLE UNLESS OTHERWISE INDICATED.
  - HUCK COLLARS FACING IN.
  - ITEM 29 BRACKET TO BE LEVEL WITHIN .50.
  - ITEM 30 BRACE TO BE INSTALLED FIRST ON TO STIFFENER AND THEN ITEM 38 BRACE ON TOP OF ITEM 30.
  - ITEMS 30 AND 38 BRACES TO BE INSTALLED FAR SIDE OF ITEM 5 BRACKET.



NOTICE:  
THIS DRAWING AND THE INFORMATION CONTAINED THEREIN ARE CONFIDENTIAL AND THE PROPERTY OF ARI. NO USE OR DISCLOSURE OF THE DRAWING OR INFORMATION CONTAINED THEREIN SHALL BE MADE WITHOUT PRIOR WRITTEN CONSENT OF ARI.

REV	DATE	DR	CHK	DESCRIPTION	EST WT
-	-	-	-	EFF LOT 22-50016	
-	-	-	-	DIMS 1.25 & 16.46 & Ø.56 HOLE CALLOUT	
-	-	-	-	NOTES 7, 8, 9, 10 & 11, ADDED VIEW B-B, ADDED	
C	04-05-05	DGM		NOTE B WAS WELD PROCEDURE FOR MILTON, ADDED	
-	-	-	-	BRACES: EFF LOT 22-50015	
B	11-23-04	DWO	TRAD	PICTURE CHANGE ONLY, REV ITEM 30 & 38	
A	-	-	-	ORIGINAL ISSUE	
RV	-	-	-	-	-

LINE NO.	PART NO.	DESCRIPTION
00	5W539600	WITHOUT TECTYL
01	5W539601	WITH TECTYL

UNLESS OTHERWISE NOTED ALL DIMS. ARE IN INCHES	CODE NO. 22-50015
American Railcar Industries	
APPLIANCE ARRGT-SAFETY, CF 3201 CF 3256	
DWG NO. 5-W-5396 REF	SIZE E
SCALE 1/8"	SHEET