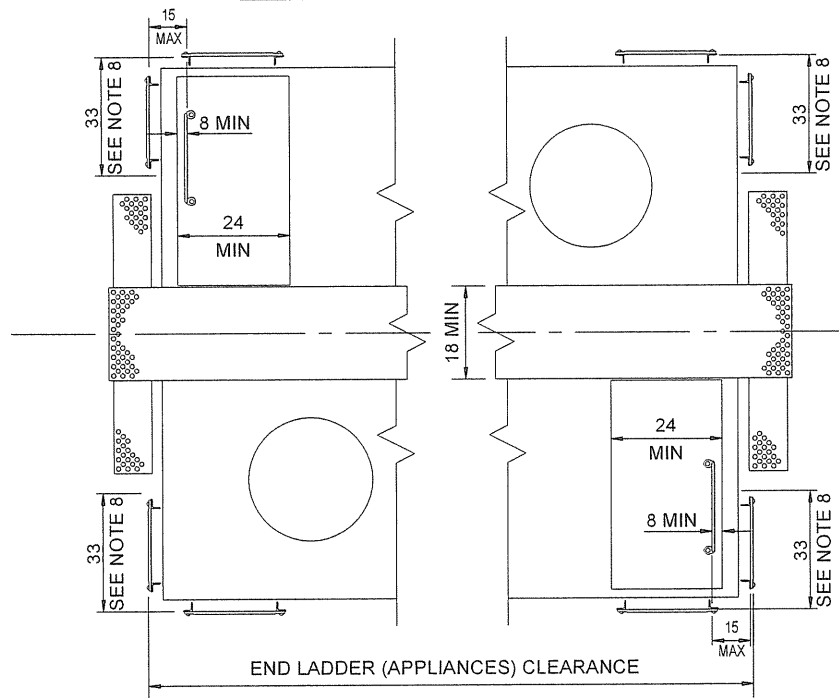
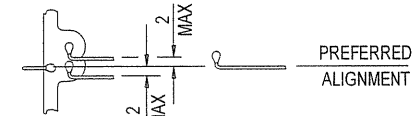
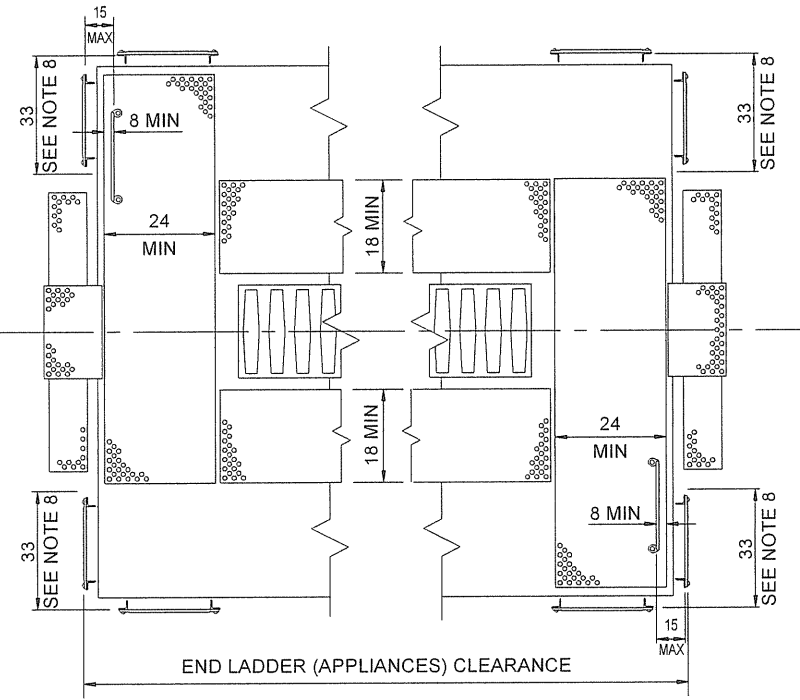


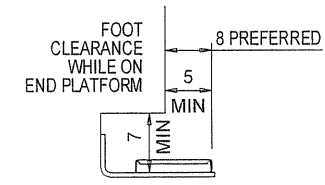
PLAN VIEW SINGLE RUNNING BOARD



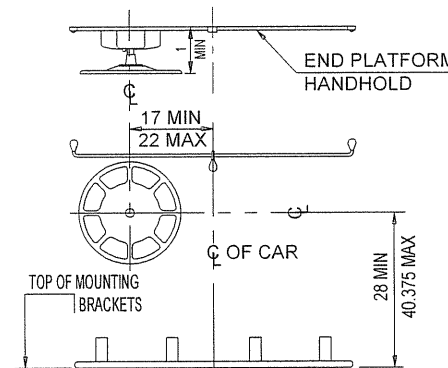
PLAN VIEW DUAL RUNNING BOARDS



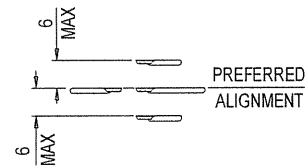
VIEW 1



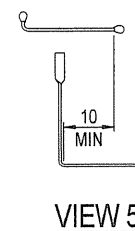
VIEW 2



VIEW 3
HAND BRAKE END



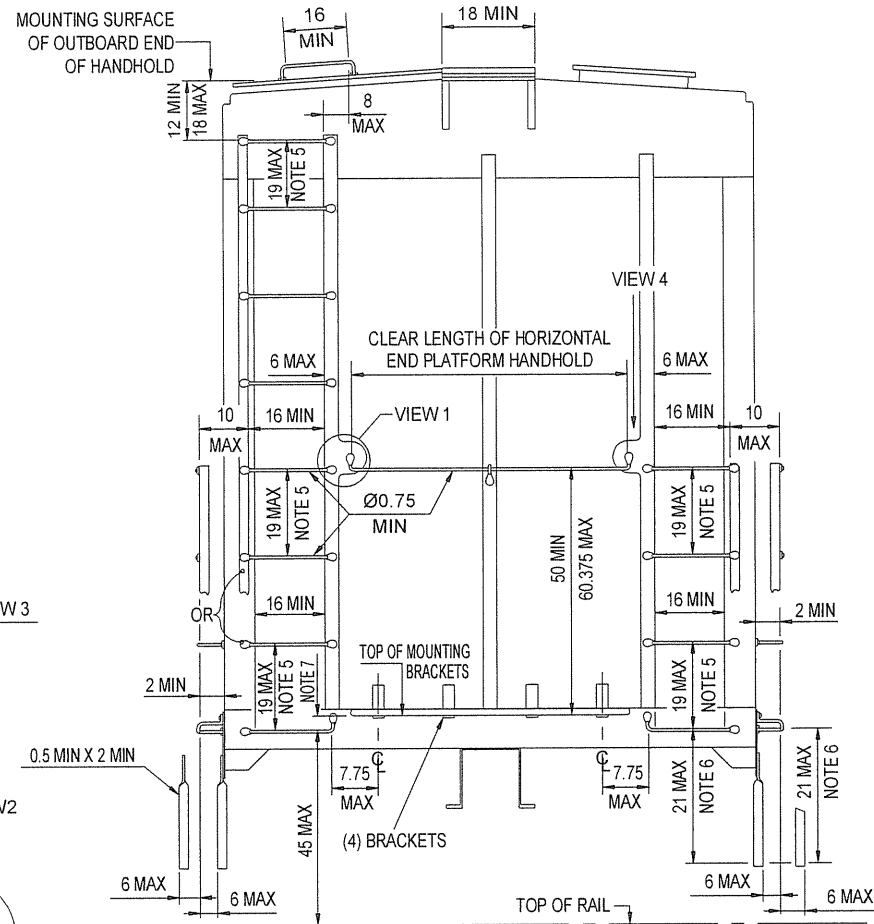
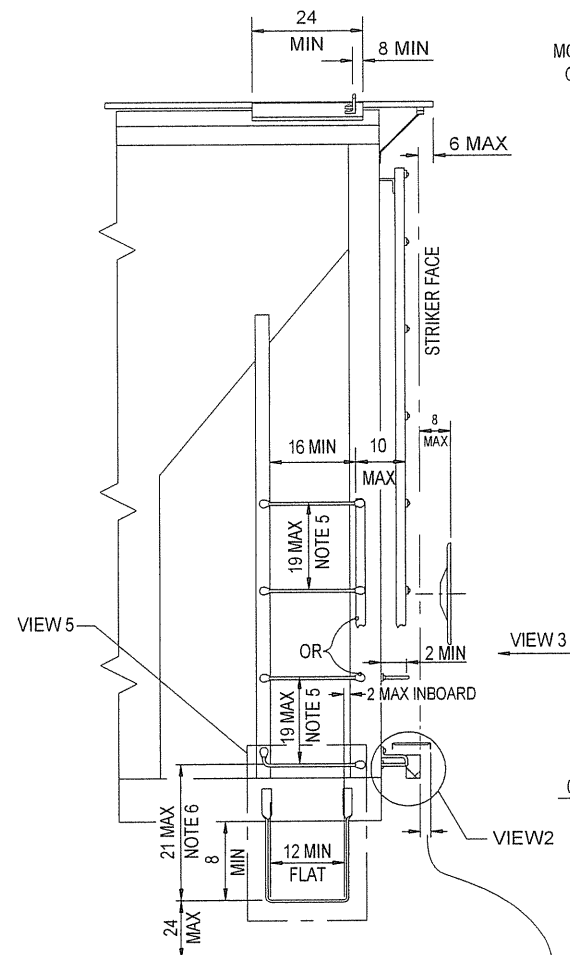
VIEW 4



VIEW 5

NOTES:

1. THIS FIGURE SHOWS ARRANGEMENT IN GENERAL, SEE TEXT OF APPENDIX "B".
2. ALL DIMENSIONS MEASURED IN INCHES.
3. ALL VERTICAL DIMENSIONS RELATIVE TO STEPS AND HORIZONTAL HANDHOLDS ARE MEASURED TO THE TOP SURFACES.
4. LOCATE HANDBRAKE AS SHOWN IN VIEW 3.
5. VERTICAL SPACING OF HANDHOLDS AND LADDER TREADS AT EACH CORNER MAY VARY BY 2 INCHES MAX. VERTICAL SPACING BETWEEN INDIVIDUAL SIDE HANDHOLDS AND CORRESPONDING END HANDHOLDS MAY VARY BY 2 INCHES MAX.
6. IF BOTTOM TREAD OF SILL STEP IS MORE THAN 21 INCHES BELOW TOP SURFACE OF LOWEST ADJACENT SIDE HANDHOLD, AN INTERMEDIATE TREAD MUST BE APPLIED SUCH THAT SPACING BETWEEN TREADS AND FROM TOP TREAD TO LOWEST SIDE AND LOWEST END HANDHOLDS DOES NOT EXCEED 21 INCHES. VERTICAL CLEARANCES ABOVE ALL SILL STEP TREADS MUST BE NO LESS THAN 8 INCHES.
7. MOUNTING SURFACE OF END PLATFORM MOUNTING BRACKETS TO BE NO MORE THAN 2 INCHES ABOVE OR NO MORE THAN 4.375 INCHES BELOW TOP SURFACE OF NEAREST END HANDHOLD.
8. SEE TEXT FOR END LADDER (APPLIANCES) CLEARANCE.



0 FOR CARS WITH CONVENTIONAL DRAFT GEARS OR CUSHIONING DEVICES HAVING LESS THAN 6 INCHES TRAVEL.
 6 MAX. FOR CARS WITH CUSHIONING DEVICES HAVING 6 INCHES OR MORE TRAVEL WITH DEVICE CLOSED-FULL BUFF.

SAFETY APPLIANCES FOR COVERED HOPPER CARS AND OTHER HOUSE CARS WITH ROOF HATCHES
 S-2044
 APPENDIX B
 FIGURE B1
 ADOPTED 0000
 AMENDED SEPTEMBER 2, 2005